

5-minute check

for controlling the frame insert with 2 motors,
2 motors plus and 4 motors

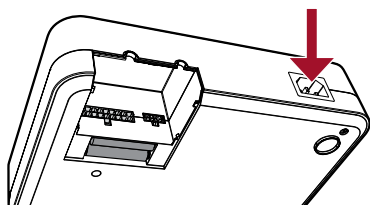


Power cable

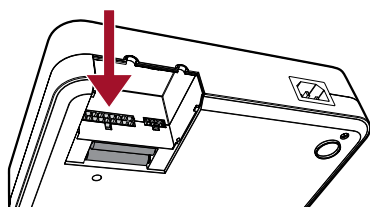
- 1** Supplies electricity to your socket;
are all the fuses switched on?



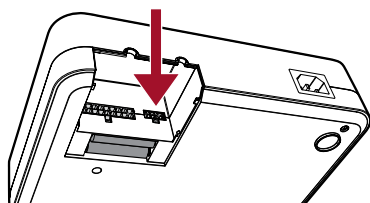
- 2** Is the power cable in the socket and
the control box connected?



- 3** Is the insert frame cable connected to the
control box?



- 4** Is the base station (station for the remote
control) cable connected to the control box?



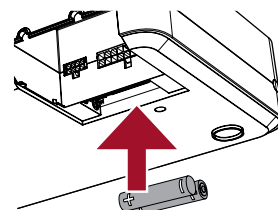
- 5** Do all the cables appear to be damage-free?

Batteries

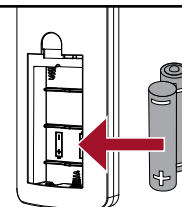
- 6** Are all the type AAA batteries correctly
inserted in the control box? Are any dead?

Warning:

If the control system starts
to beep when you take
the remote control
out of the base station,
this is a warning that
the batteries in the
control box are about
to run out.



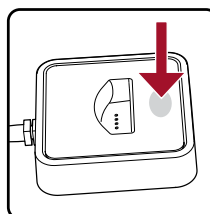
- 7** Are all the type AAA batteries
correctly inserted in
the remote control?
Are any dead?



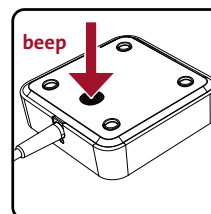
Do not use rechargeable batteries!

Connecting the remote control to the control box

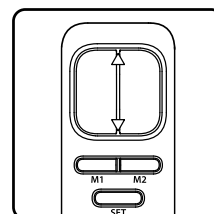
If, inspite of your checking the cables and the batteries,
your insert frame with motor still fails to function,
re-connect the remote control to the control box:



Press reset
button of the
base station
once and
release



Keep marked
surface on the
back of the base
station pressed
for 3 seconds



Save: Within 10
seconds press
whatever button
of the remote
control

Customer services

If your insert frame with motor does not start to function after you have carried out this 5-minute check,
please contact our Customer Services. Hüsler Nest Vertriebs GmbH, service@huesler-nest.de

Customer Services will need the following information: Dealer's name, date of purchase, invoice number, reference,
item number, control box series number (on the bottom of the control box, starting with SN IQ...)